

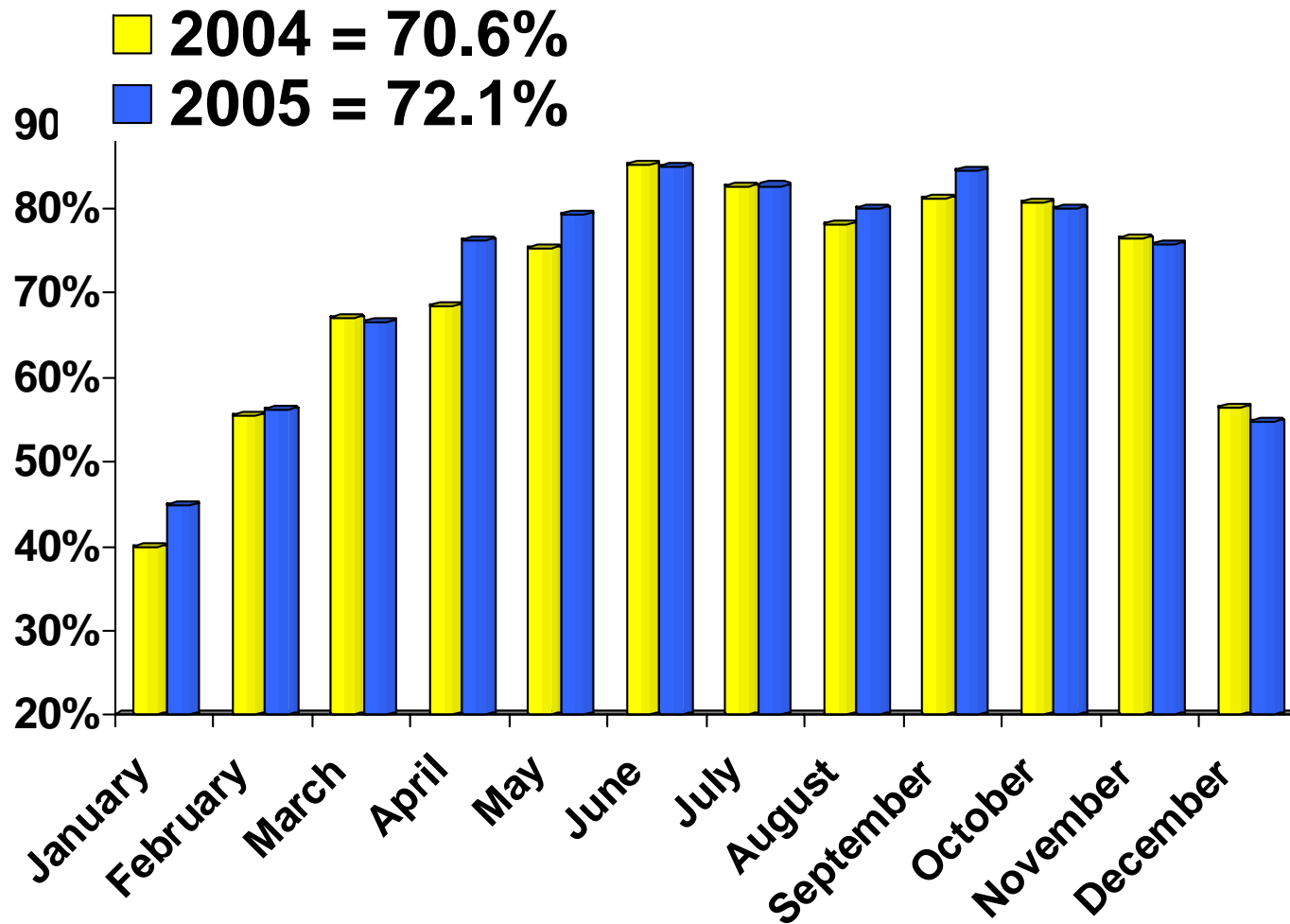
Illinois Hospitality Industry Health Indicators

Sponsored by:



Prepared by the Research Department of the
Chicago Convention and Tourism Bureau
Updated 1-6-2006

2005 Chicago Central Business District Hotel Occupancy Compared to 2004

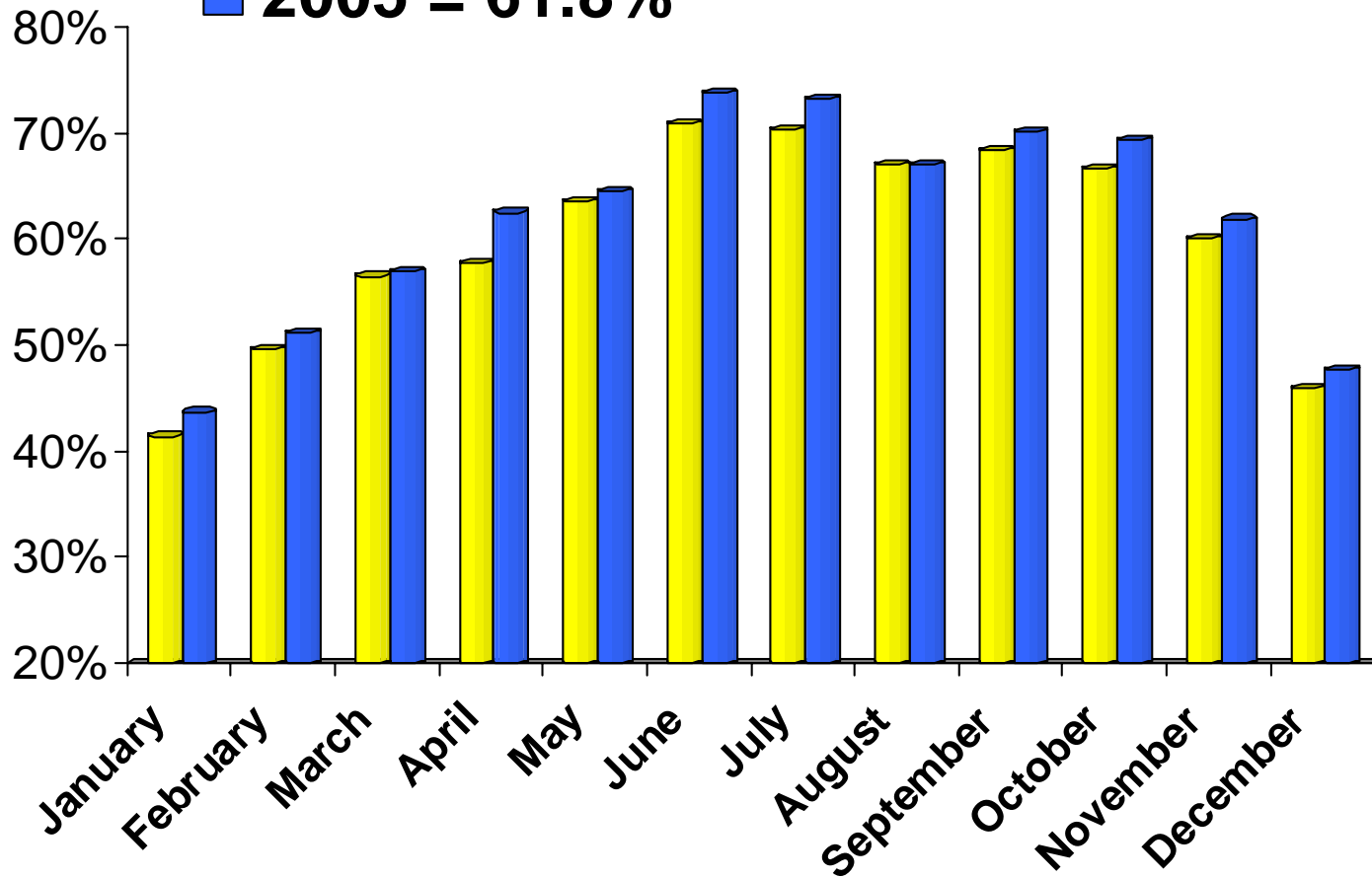


Source: Smith Travel Research.

2005 Illinois Hotel Occupancy Compared to 2004

2004 = 59.7%

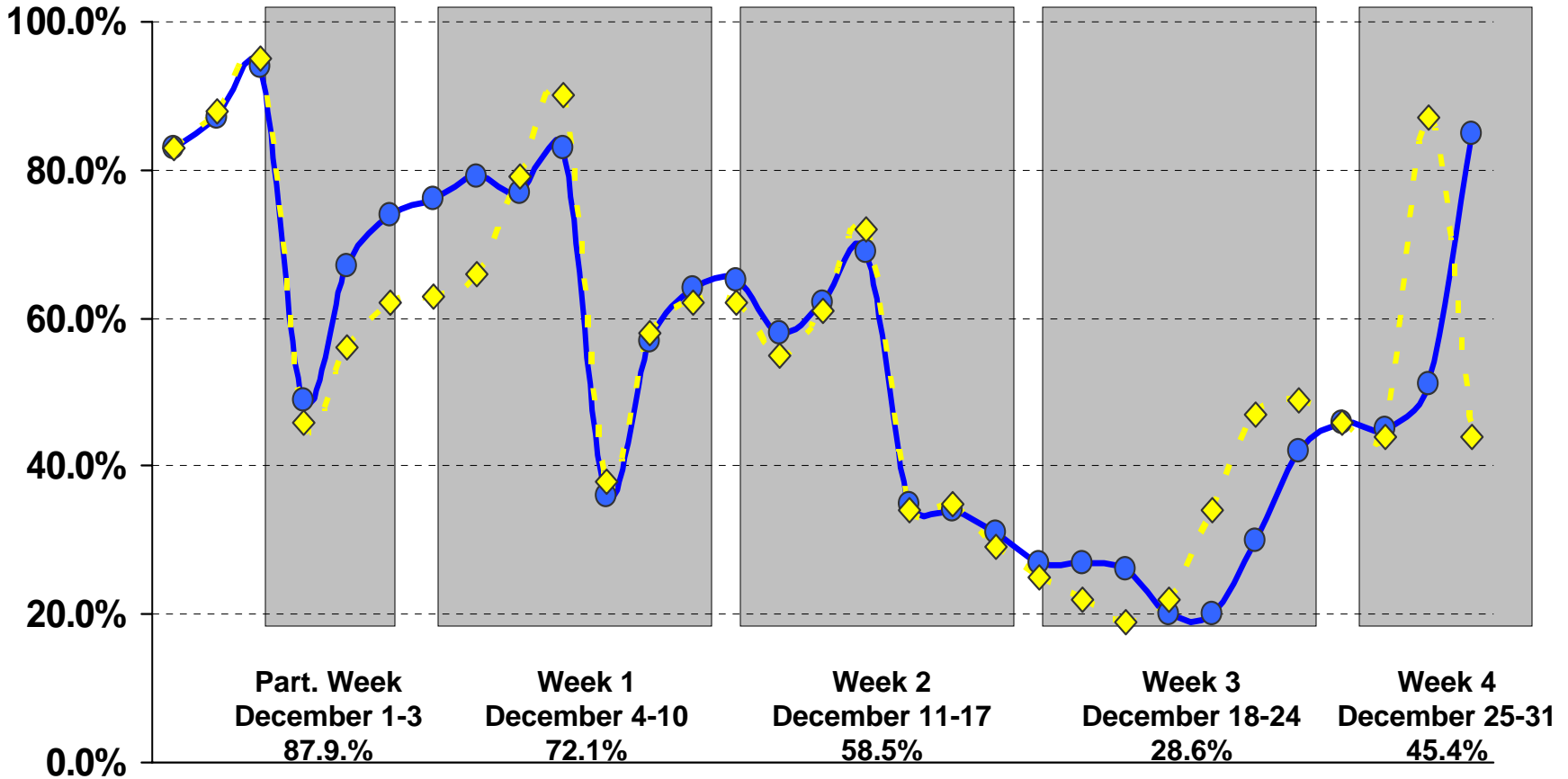
2005 = 61.8%



Source: Smith Travel Research.

Chicago CBD Daily Occupancy for December 2005

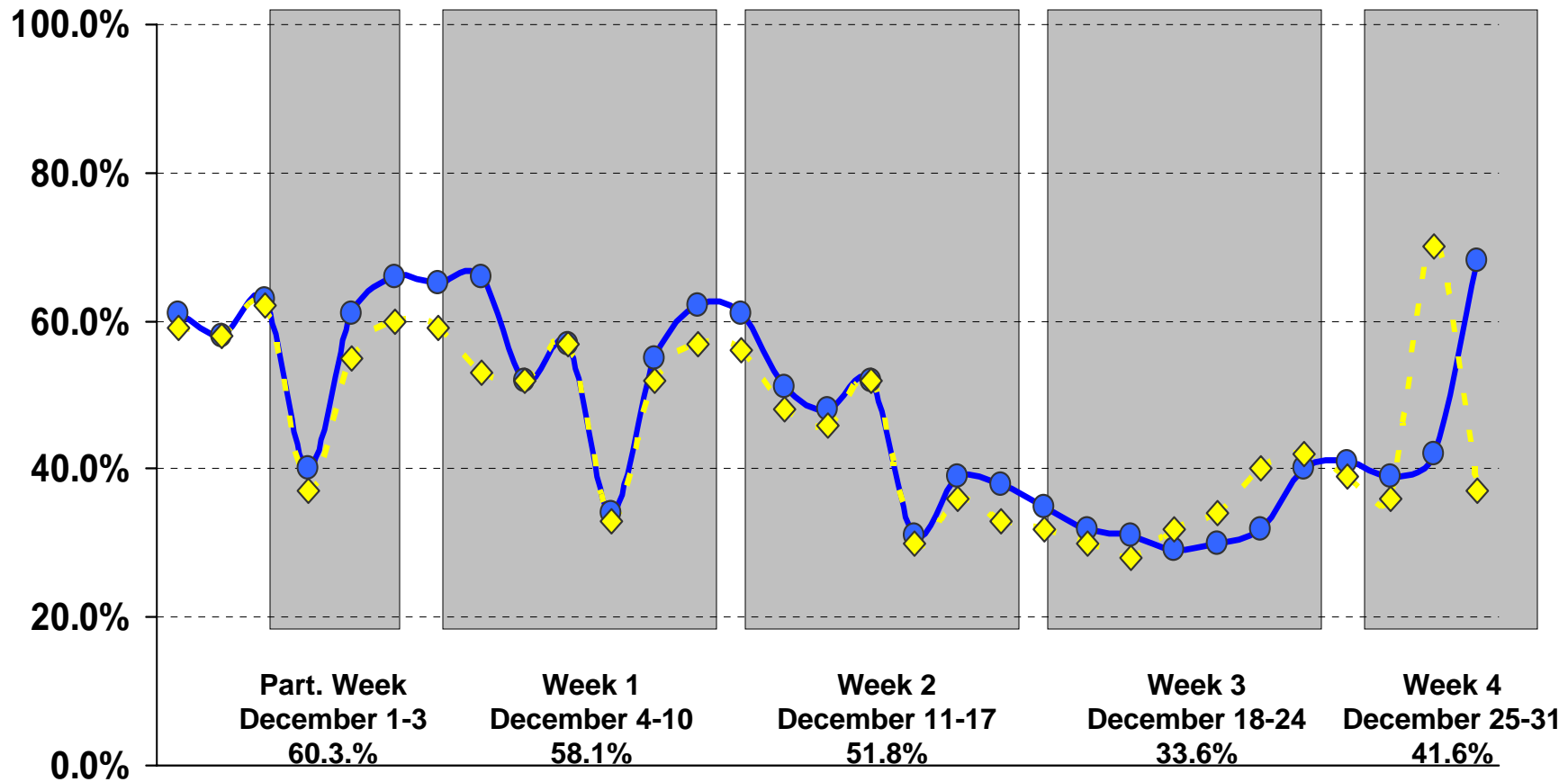
—●— 2005 MTD = 54.7% -◆- 2004 MTD = 54.0%



Source: Smith Travel Research

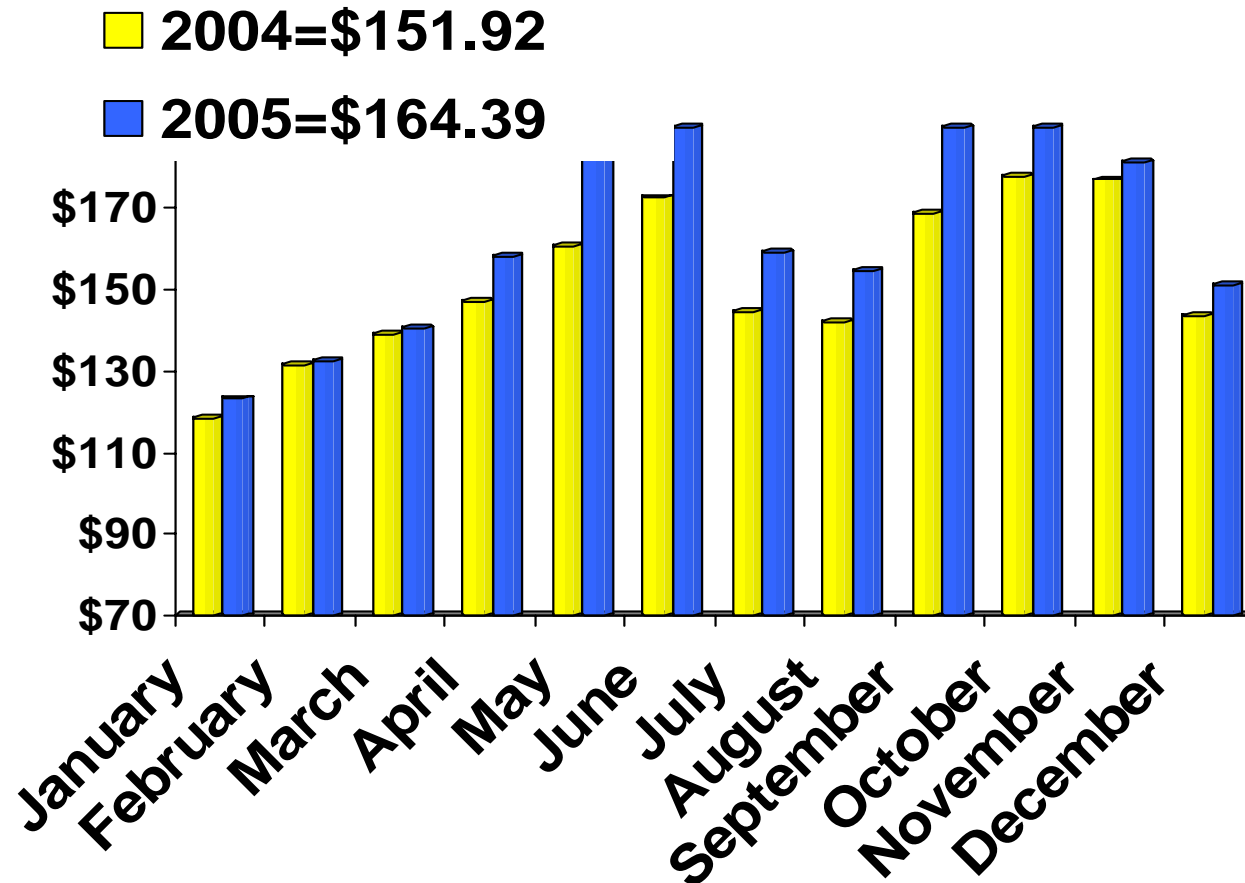
Illinois Daily Occupancy for December 2005

—●— 2005 MTD = 47.6% -◆- 2004 MTD = 45.6%



Source: Smith Travel Research

2005 Chicago Central Business District Hotel ADR Compared to 2004

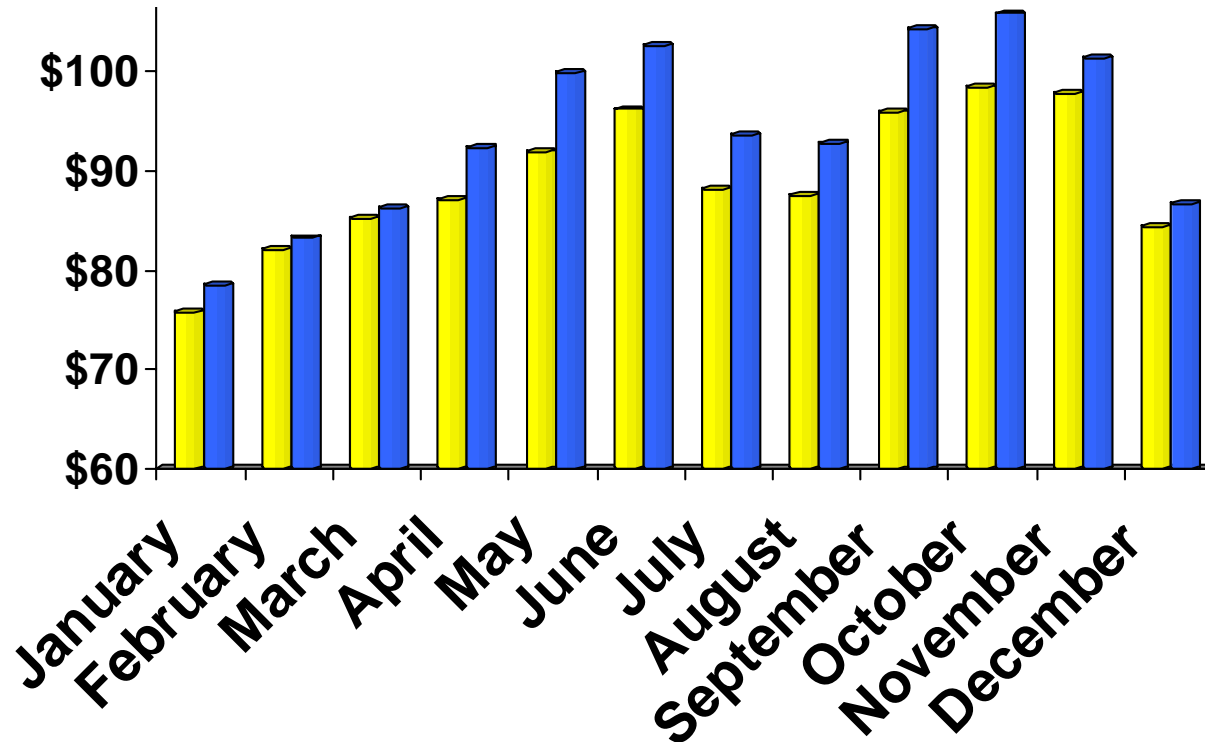


Source: Smith Travel Research.

2005 Illinois Hotel ADR Compared to 2004

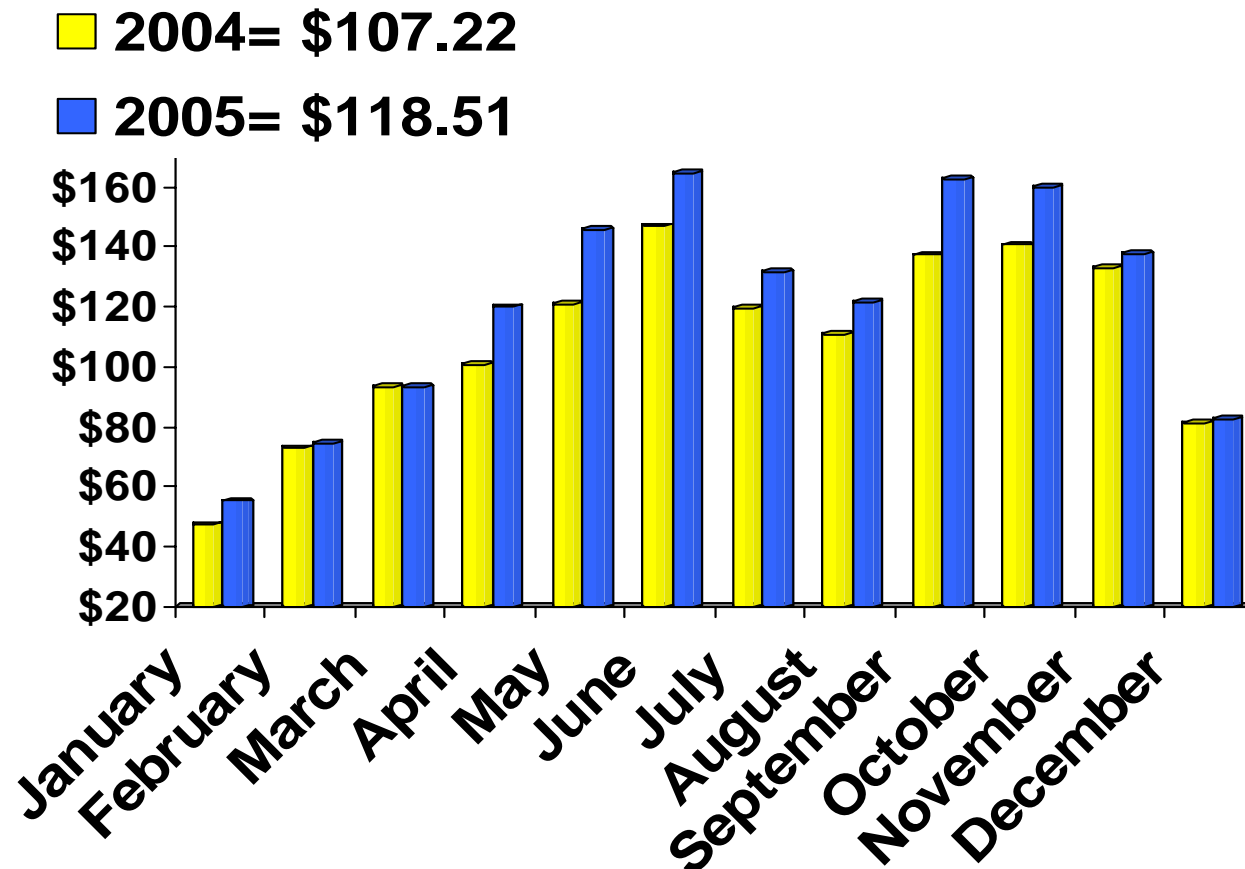
■ 2004 = \$89.25

■ 2005 = \$93.95



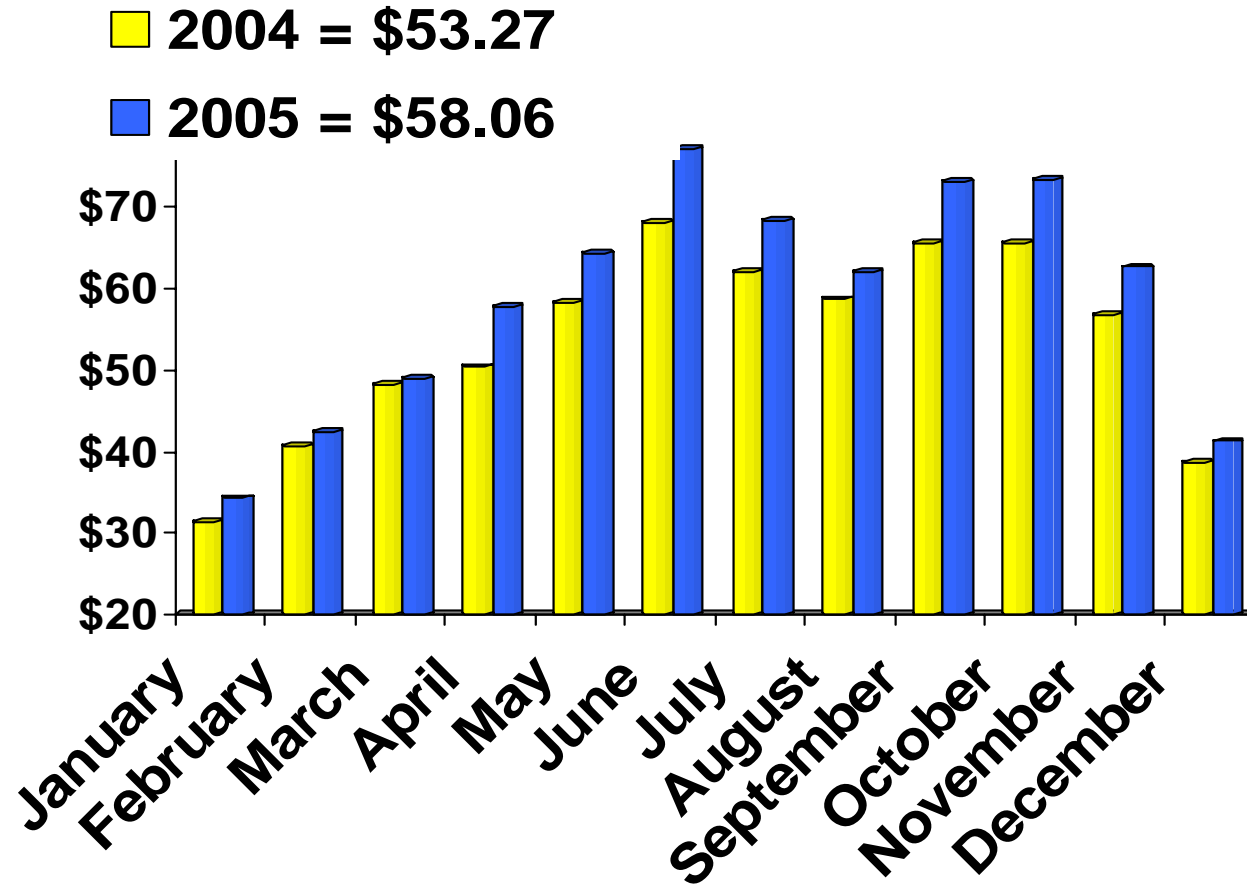
Source: Smith Travel Research.

2005 Chicago Central Business District Hotel Rev-Par Compared to 2004



Source: Smith Travel Research.

2005 Illinois Hotel Rev-Par Compared to 2004

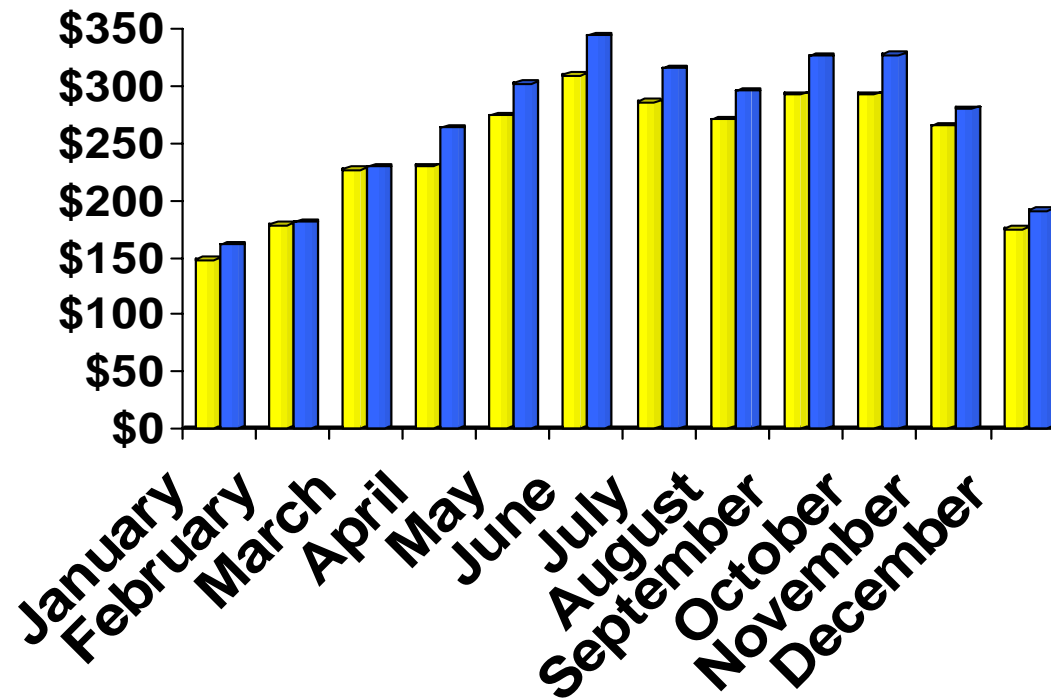


Source: Smith Travel Research.

2005 Illinois Hotel Revenue (in millions)

■ 2004 = \$2,953.1

■ 2005 = \$3,221.4



Illinois Hotel Operator's Occupation Tax

Fiscal Year Deposits

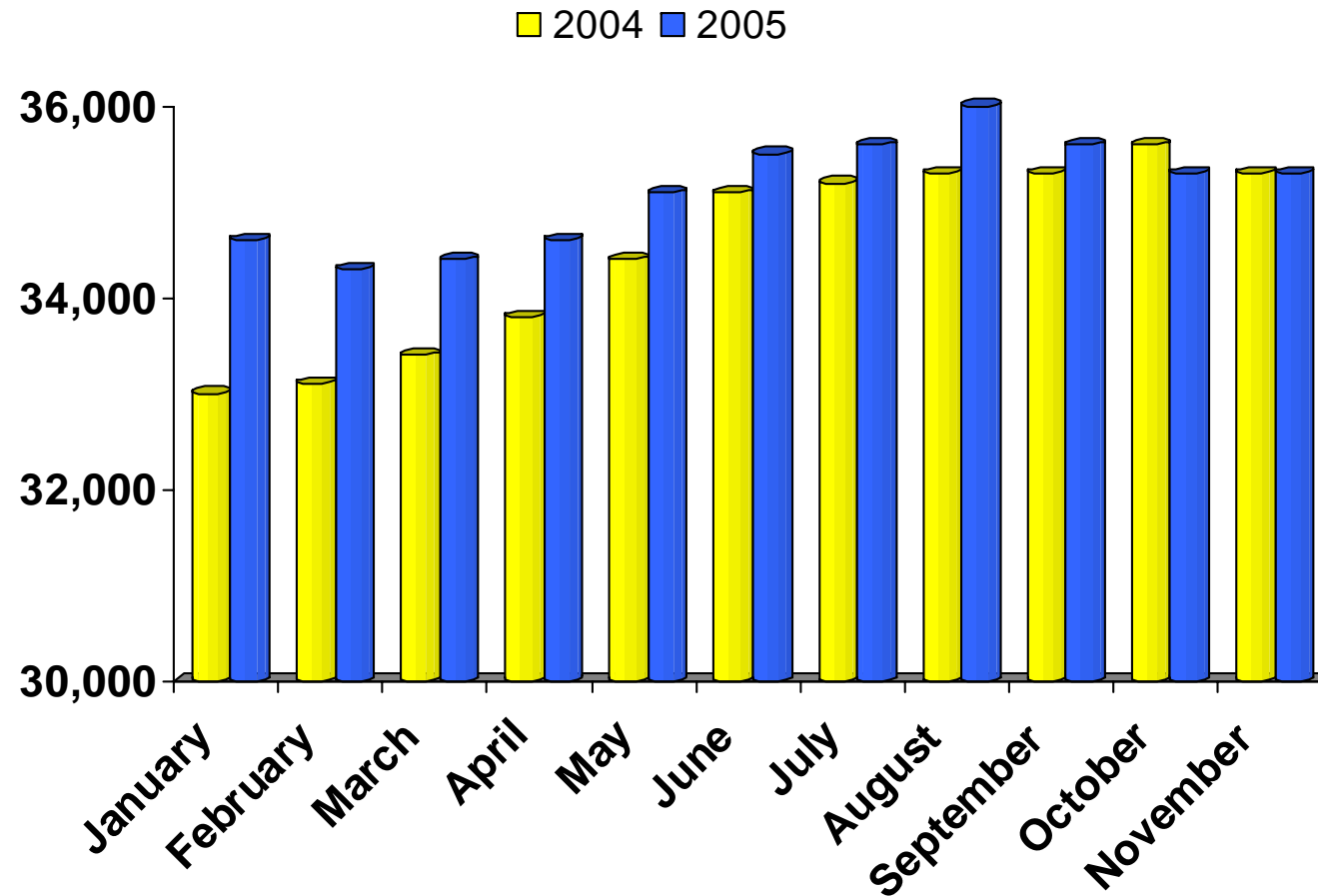
	FY '05	FY '06	+ or -
July	\$ 13,042,185	\$8,300,089.06	-36.4%
August	\$ 14,959,993	\$9,505,561.74	-36.5%
September	\$ 16,853,752	\$11,540,243.09	-31.5%
October	\$ 14,156,011	\$14,096,735.91	-0.4%
November	\$ 14,699,343	\$15,846,721.12	7.8%
December	\$ 14,576,792	\$18,001,368.91	23.5%
January	\$ 16,602,565	\$16,751,330.45	0.9%
February	\$ 13,899,415	\$16,112,232.48	15.9%
March	\$ 10,663,637		-100.0%
April	\$ 8,237,292		-100.0%
May	\$ 9,511,344		-100.0%
June	\$ 11,539,887		-100.0%
Year to Date	\$118,790,057	\$ 110,154,283	-7.3%
Year Total	\$158,742,217	\$ 110,154,283	-7.3%

Source: Illinois Department of Revenue

Receipts are deposited in the third month after the liability is incurred. For example, the July deposit represents April liability.

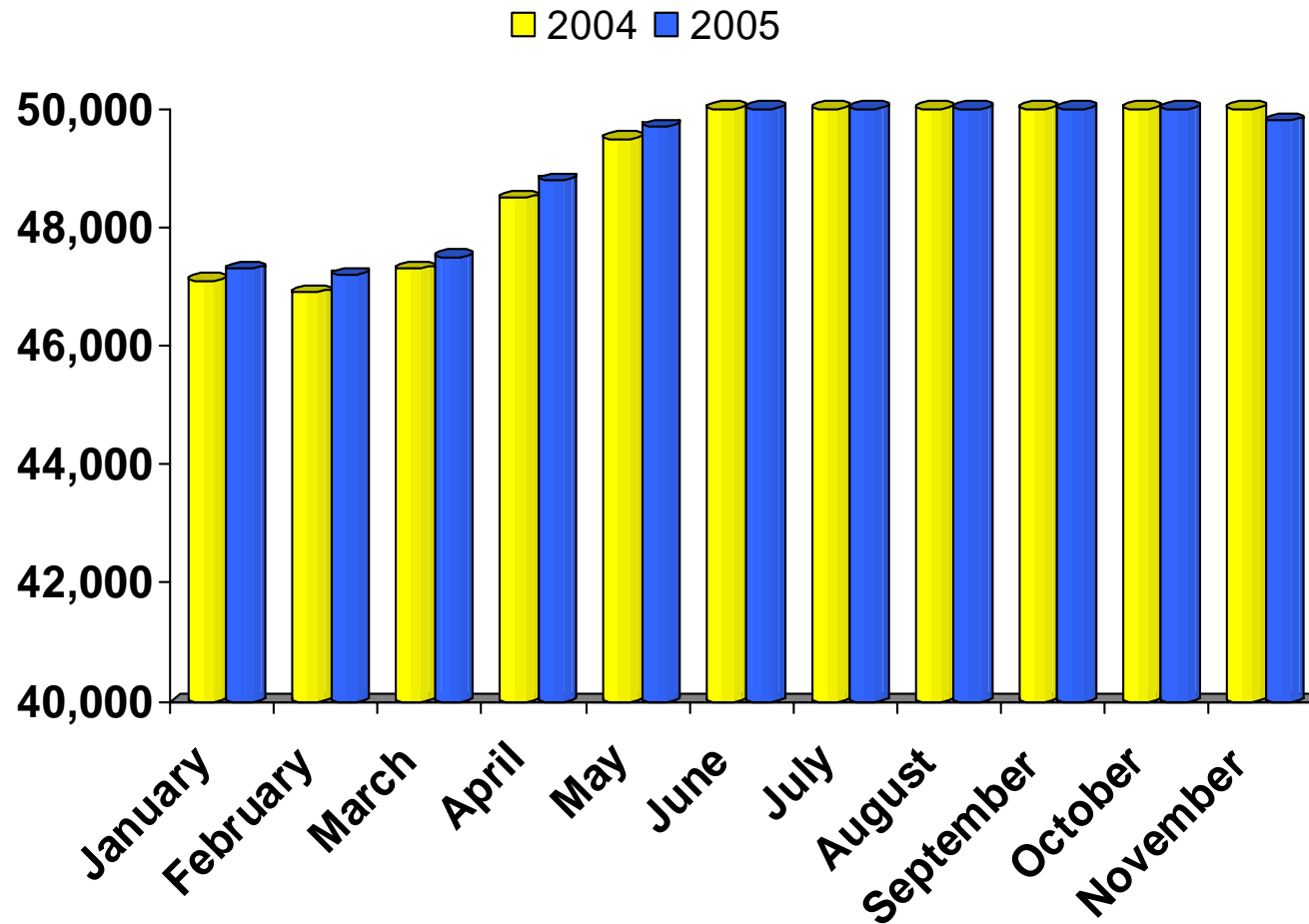
1. Estimates based on Smith Travel Research data.

2005 Accommodation Employment Chicago Primary Metropolitan Statistical Area – Compared 2004



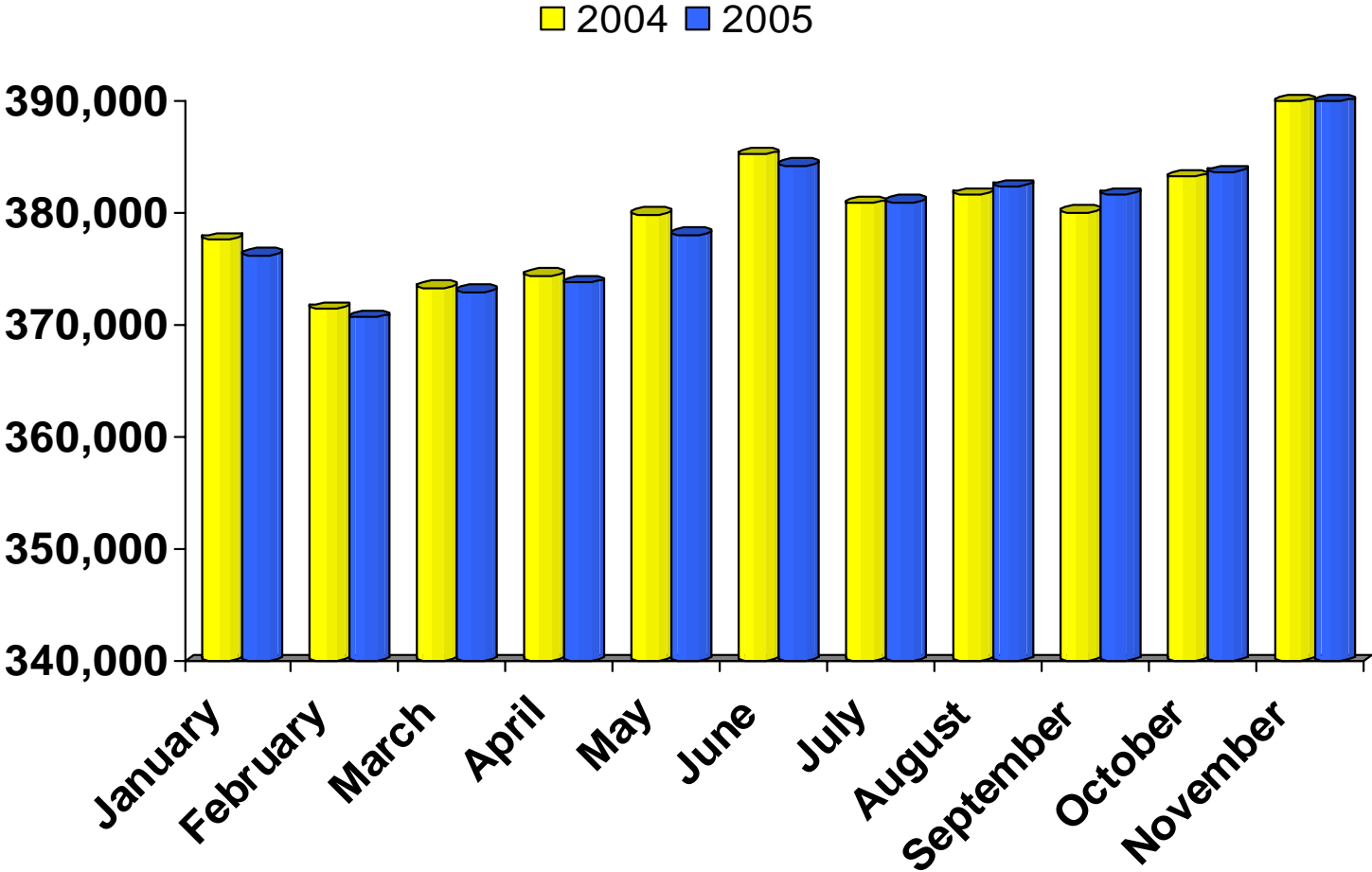
Source: Illinois Department of Employment Security

2005 Accommodation Employment State of Illinois – Compared 2004



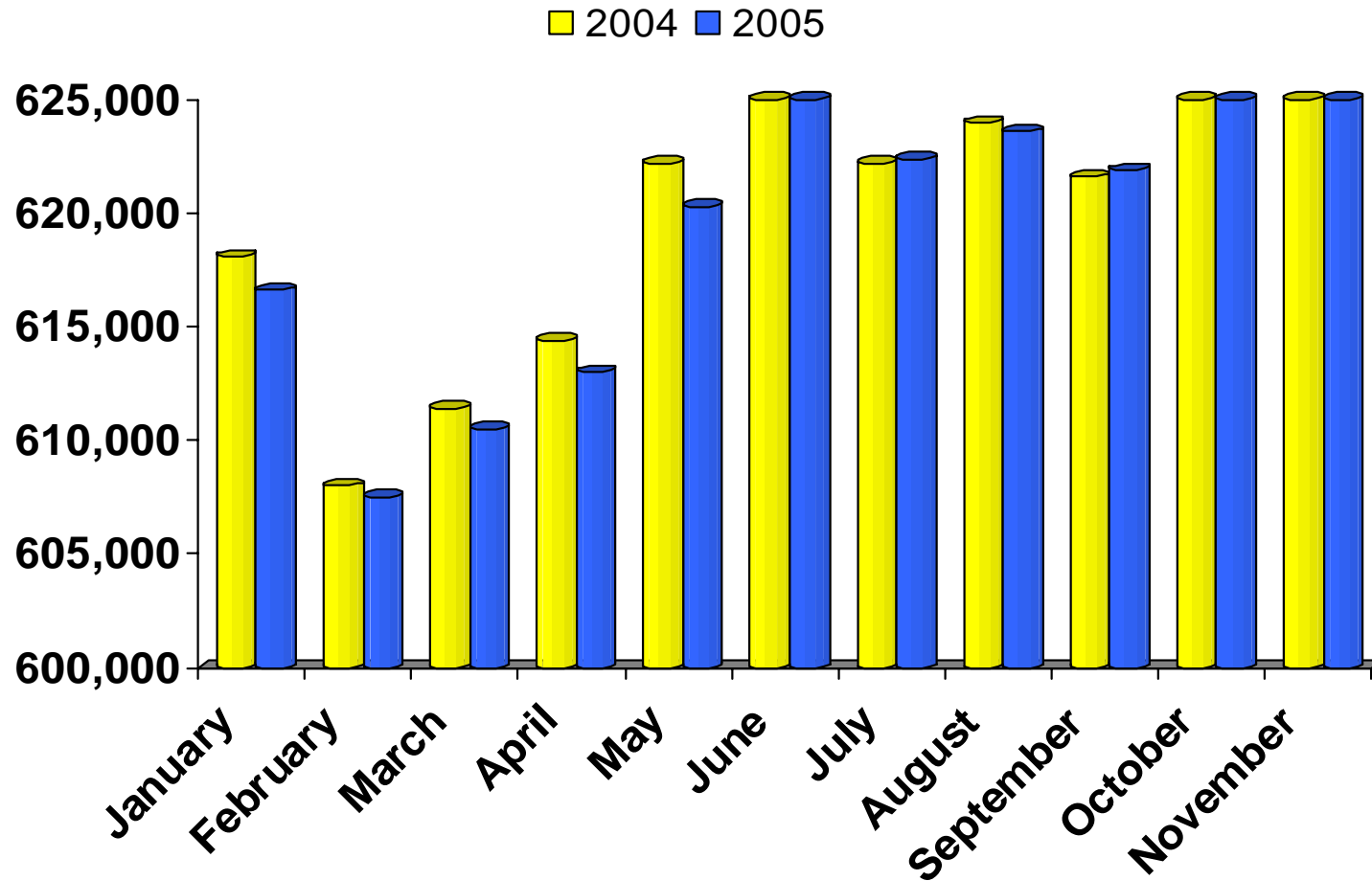
Source: Illinois Department of Employment Security

2005 Retail Employment Chicago Primary Metropolitan Statistical Area – Compared 2004



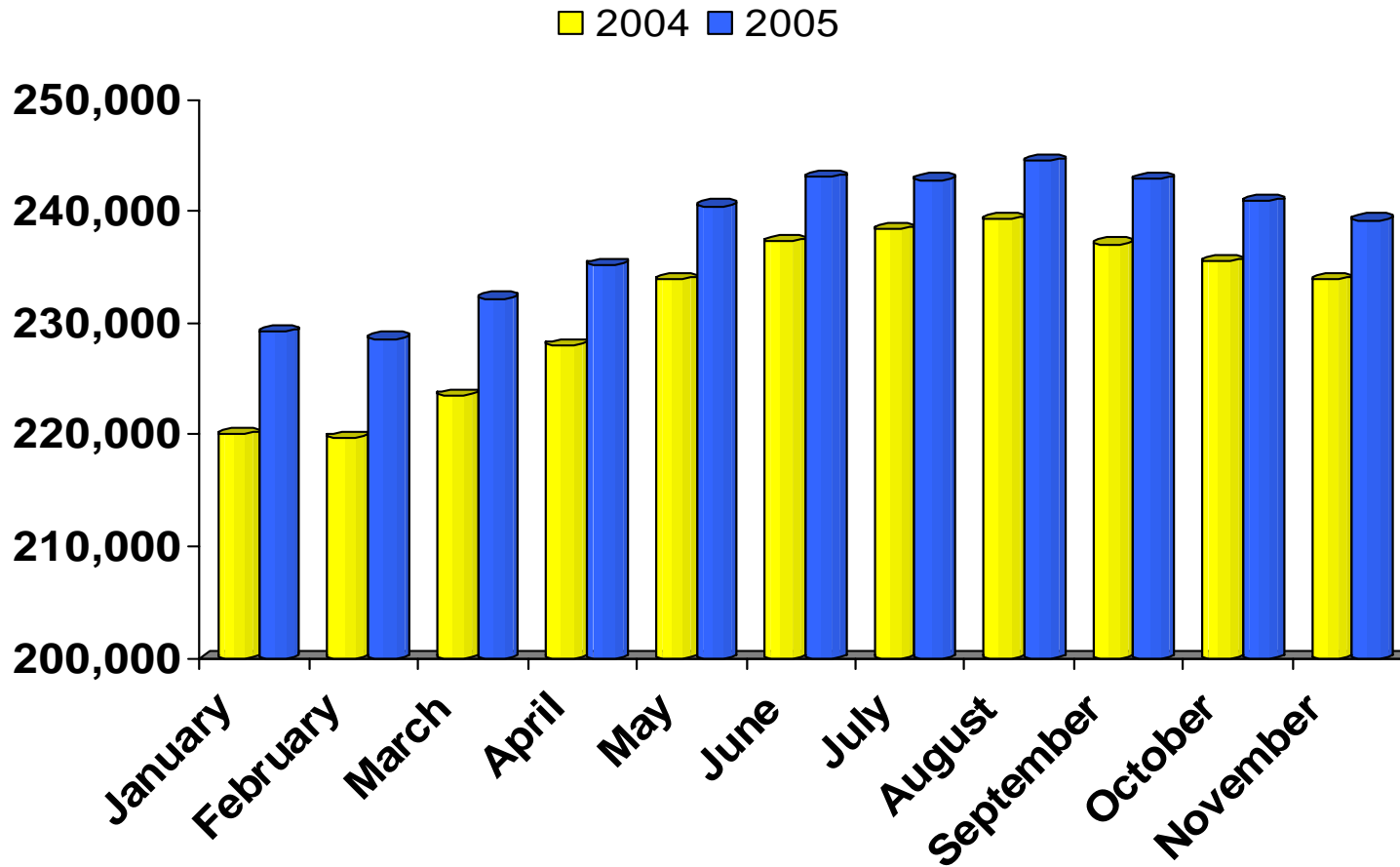
Source: Illinois Department of Employment Security

2005 Retail Employment State of Illinois – Compared 2004



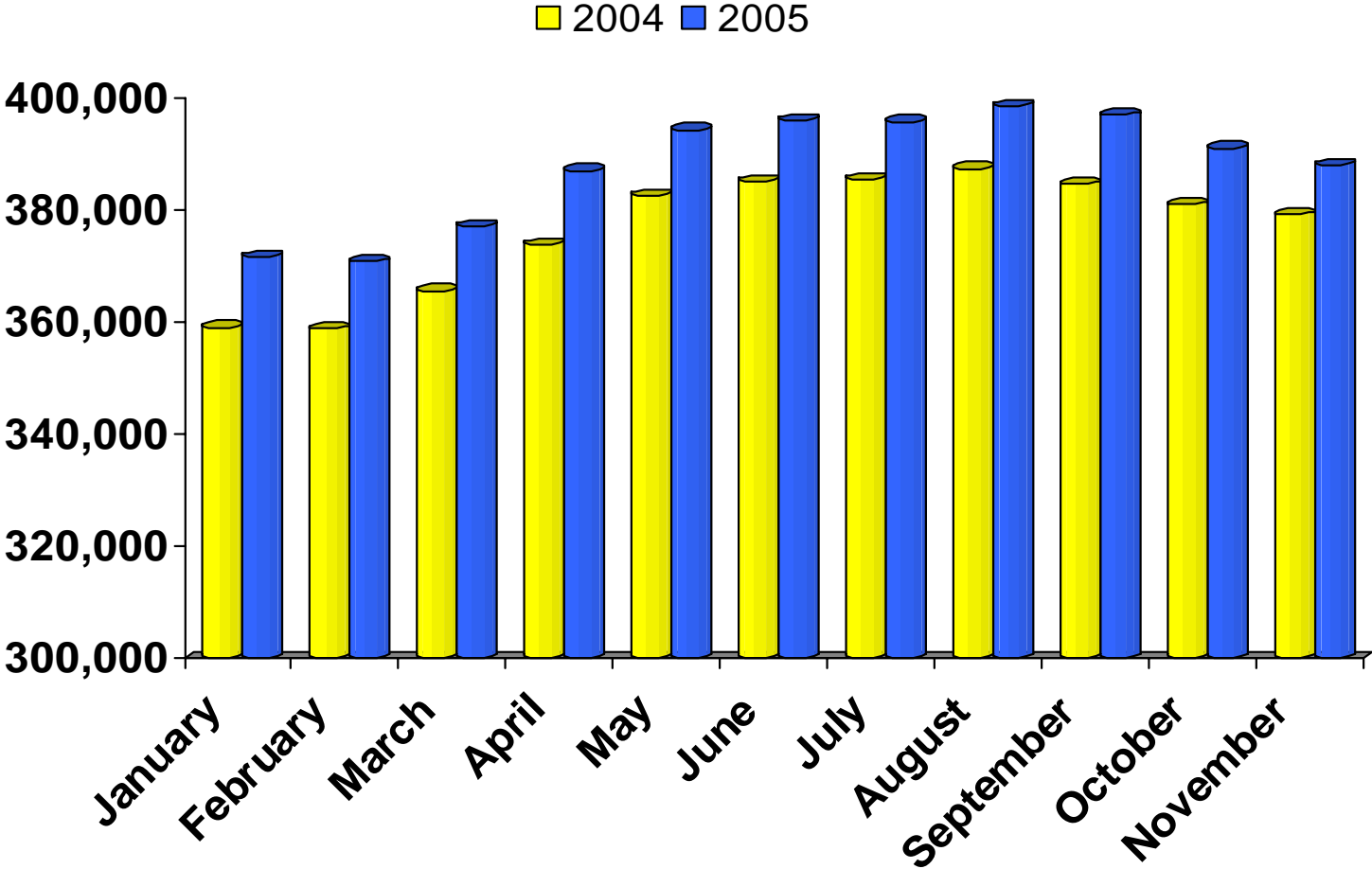
Source: Illinois Department of Employment Security

2005 Food Services and Drinking Places Employment Chicago Primary Metropolitan Statistical Area – Compared 2004



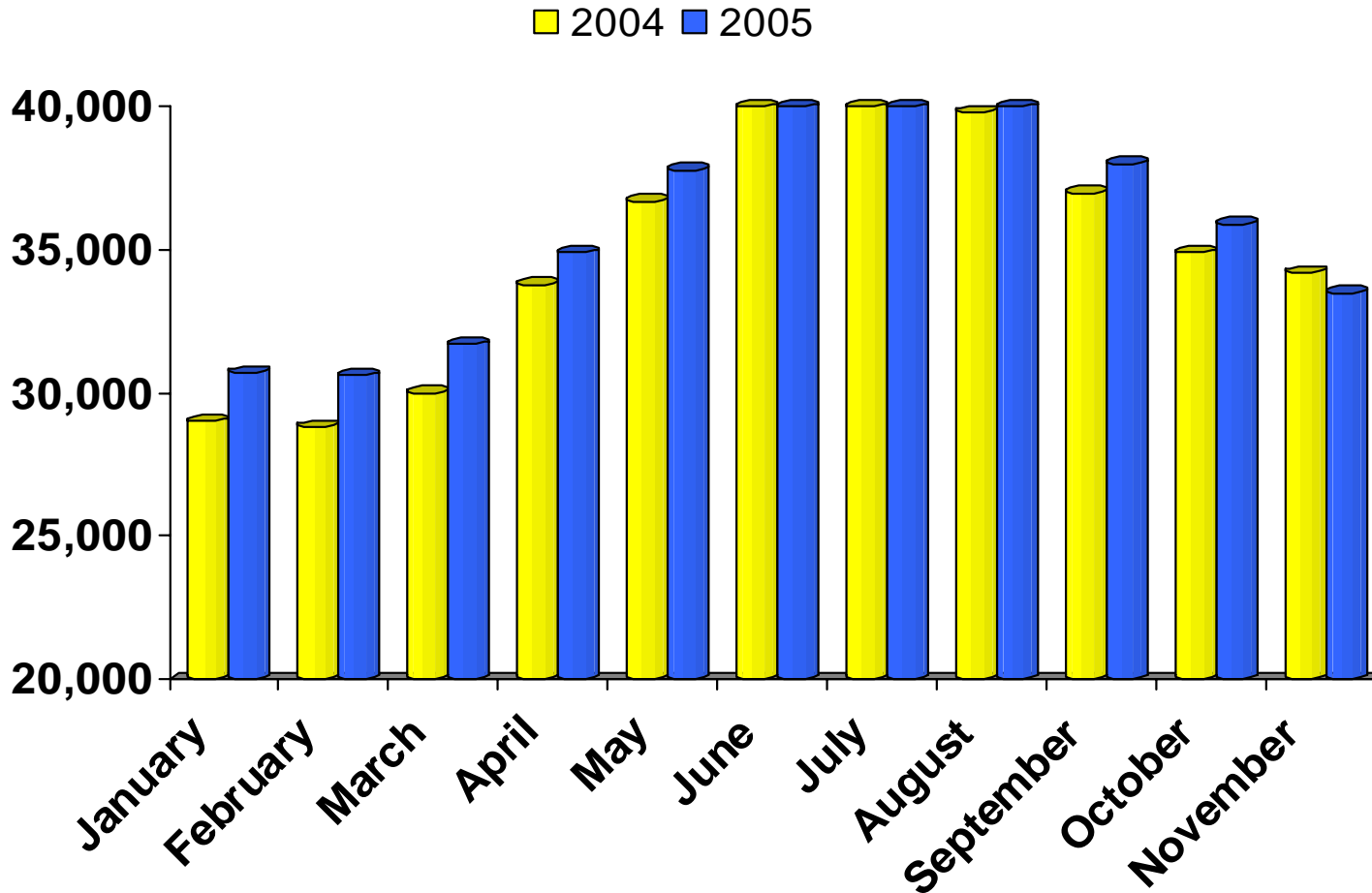
Source: Illinois Department of Employment Security

2005 Food Services and Drinking Places Employment State of Illinois – Compared 2004



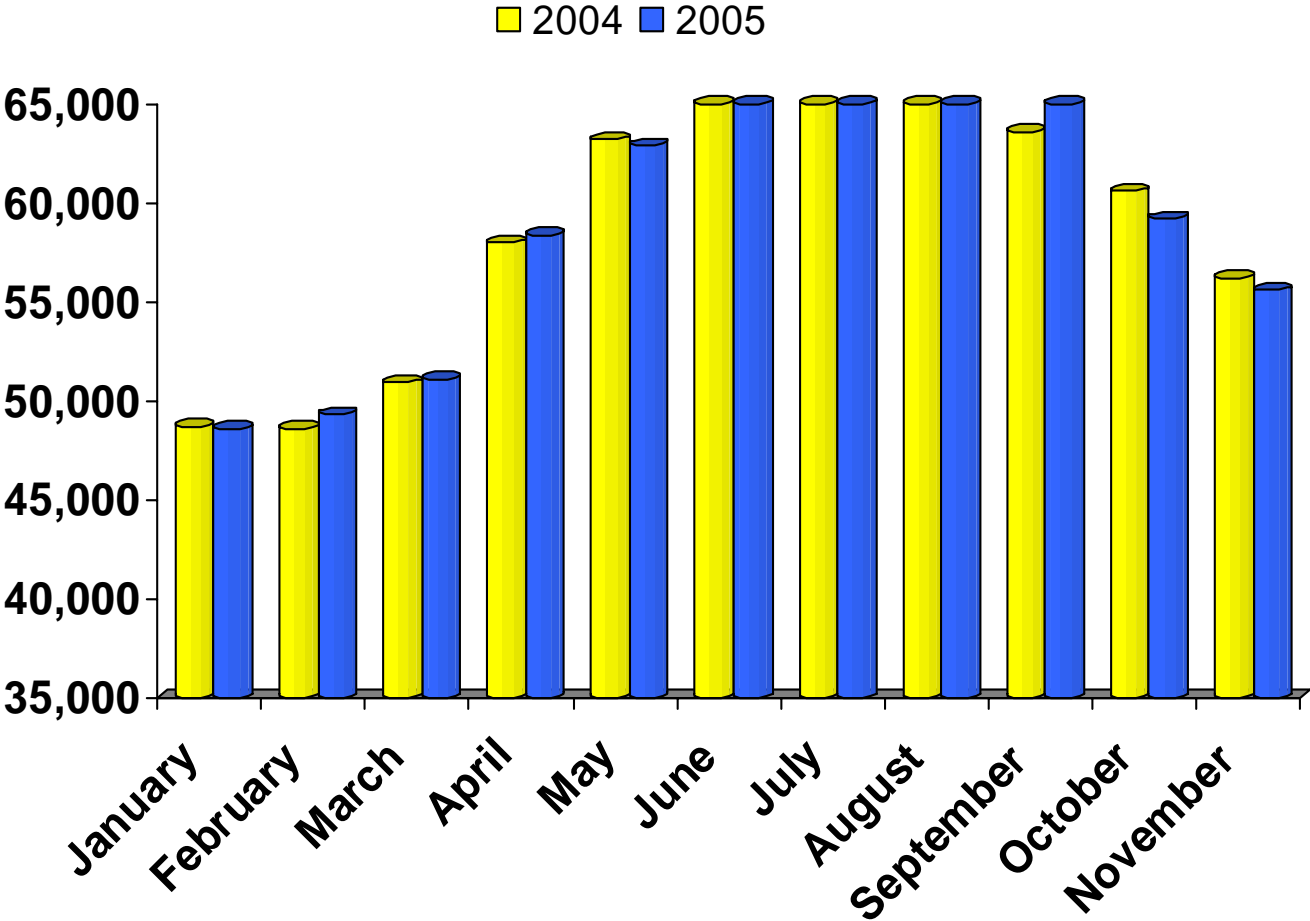
Source: Illinois Department of Employment Security

2005 Amusement, Gambling, and Recreation Employment Chicago Primary Metropolitan Statistical Area – Compared 2004



Source: Illinois Department of Employment Security

2005 Amusement, Gambling, and Recreation Employment State of Illinois – Compared 2004



Source: Illinois Department of Employment Security